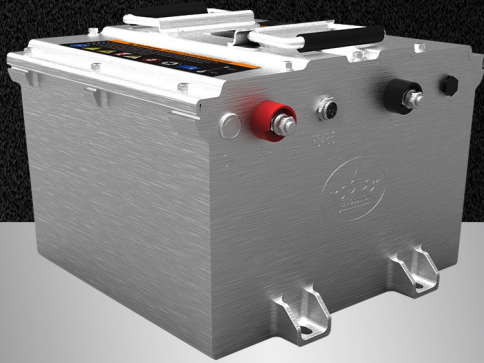




EVOLUTION LITHIUM BATTERY



**5 YEAR WARRANTY
NO MAINTENANCE
ALUMINUM PACK**

MODEL	
Product Number	L48110

FUNCTIONAL SPECIFICATIONS	
Norminal Voltage	51.2V
Cell Chemistry	LiFePO4
Cell type	Prismatic
Cell norminal Voltage	3.2V
Ampere-hour Capacity	110Ah
Watt-hour Capacity	5.28kwh
Charge Efficiency	>98%
Impedance	<400 mΩ
Cycles @ 80% DOD	>3500

MECHANICAL SPECIFICATIONS	
Dimmensions (L" x W" x H") (inch)	20.7"x 12.8"x 9.4"
Weight (lbs)	102.7
Case Meterial	Aluminum Alloy
Insert Terminal	M8 X 1.25 - 20
Inpress Protection Marking	IP56

DISCHARGE SPECIFICATIONS	
Continous Discharge Current	110A
Max pulse discharge current	250(30 sec)
Max instantaneous discharge current	400A (3 sec)
Protection Recover	Automatic (30 sec)
Low Voltage Disconnect	41.6V
Self Discharge per Month @ 25°C	<5%

CHARGER SPECIFICATIONS	
Continous Charge Current	≤70A
Max Charge Voltage	58.4V
Over-Voltage Recover	Automatic (≤54.4V)

ENVIRONMENTAL SPECIFICATIONS	
Charge Temperature	32°F to 110°F (0°C to 45°C)
Discharge Temperature	(-4°F to 140°F (-20°C to 55°C)
Storage Temperature	14°F to 95°F (-10°C to 35°C)