

**BOSCH**

Invented for life

# Bosch SM Mega Power Plus

## 55B24R - Maintenance Free / Calcium, Calcium Technology

### Applications

Passenger Vehicle

### Bosch Master Data

Short Order Part Number

**55B24R**

Product Series

**SM Mega Power Plus**

Bosch 10 Digit Part Number

**0986A00407**

Technology

**Calcium, Calcium**

EAN Barcode

**4047026240207**

Warranty Period

Refer [www.boschaftermarket.com.au](http://www.boschaftermarket.com.au)

Refer [www.boschaftermarket.co.nz](http://www.boschaftermarket.co.nz)

### Technical Information

Nominal Voltage

**12V**

Nominal Capacity (20HR)

**45AH**

Reserve Capacity

**76 Mins**

Cold Cranking Amperes (CCA)

**430 Amps**

#### Case Size Dimension

Length

**238 mm (9.37 inches)**

Width

**129 mm (5.07 inches)**

Container Height

**201 mm (7.91 inches)**

Total Height (with Terminal)

**225 mm (8.85 inches)**

Case Size

**B24**

Approx Weight (Gross)

**11.50 kg (25.30 lbs)**

Terminal

**(+-)**

Container Material

**Polypropylene**

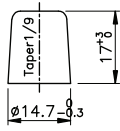
Lid Design

**Labrynth Lid**

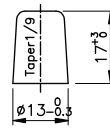
Base Hold Down

**-**

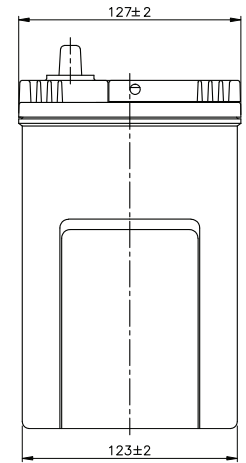
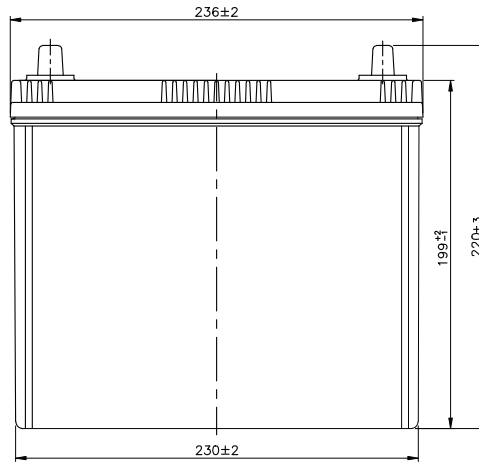
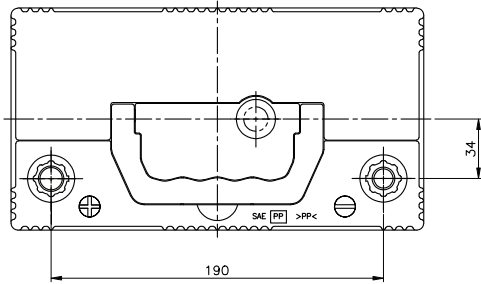
# Product Dimension & Design



POSITIVE TERMINAL S=1:1

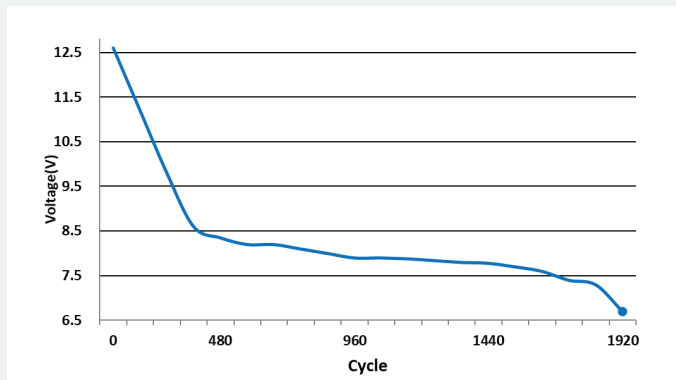


NEGATIVE TERMINAL S=1:1

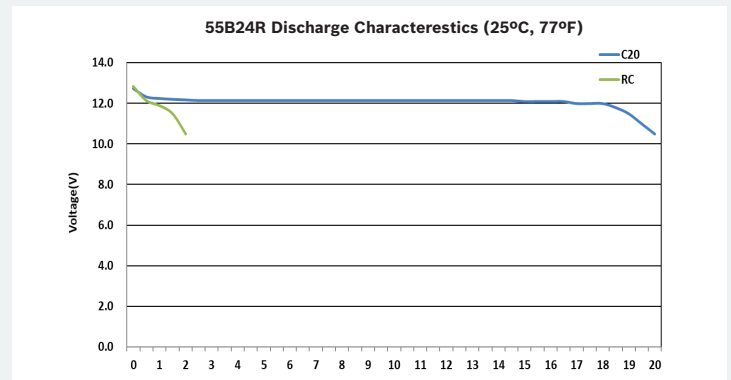


# Product Performance Overview

## Depth of Discharge Cycling Test



## Discharge Characteristics Test



Your address for genuine Bosch quality:

**Dealer stamp here:**