



BOSCH

Invented for life

Bosch STT Hightec EFB

EFB-C-230 - Maintenance Free / Enhanced Flooded Battery Technology

Applications

Heavy Commercial Vehicles



Image is generic & may vary to actual product

Bosch Master Data

Short Order Part Number

EFB-C-230

Product Series

STT Hightec EFB

Bosch 10 Digit Part Number

0092T57001

Technology

Enhanced Flooded Battery

EAN Barcode

4047026617054

Warranty Period

Refer www.boschaftermarket.com.au

Refer www.boschaftermarket.co.nz

Technical Information

Nominal Voltage

12V

Nominal Capacity (20HR)

230AH

Reserve Capacity

480 Mins

Cold Cranking Amperes (CCA)

1400 Amps

Case Size Dimension

Length

516 mm (20.31 inches)

Width

272 mm (10.70 inches)

Container Height

214 mm (8.42 inches)

Total Height (with Terminal)

236 mm (9.29 inches)

Case Size

EN C

Approx Weight (Gross)

56.90 kg (125.18 lbs)

Terminal



Container Material

Polypropylene

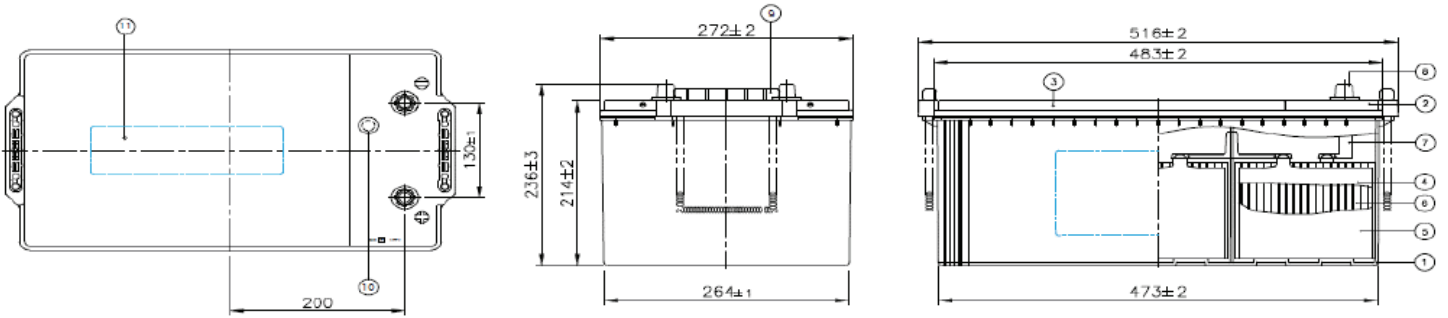
Lid Design

Labrynth Lid

Base Hold Down

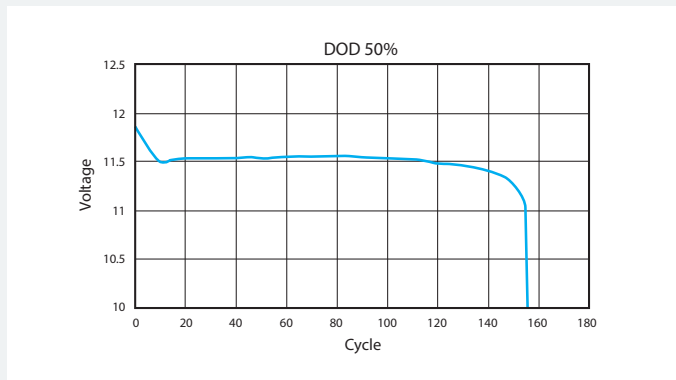
BX

Product Dimension & Design

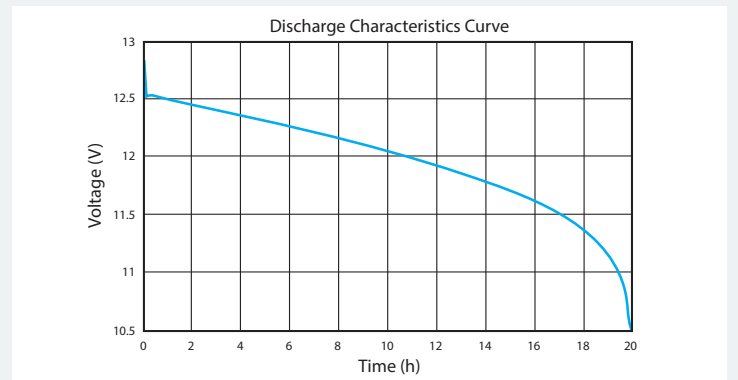


Product Performance Overview

Depth of Discharge Cycling Test



Discharge Characteristics Test



Your address for genuine Bosch quality:

Dealer stamp here: