

Overview

Vision Technology provides safe LiFePO4 battery solutions for UPS , Energy storage system and Recreational Vehicle. This battery system serves for solutions for UPS , Energy storage system and Recreational Vehicle with perfect compatibility and safe long cycle.

Features

- Customized protection board functions and parameters
- Intelligent balance management
- Built-in automatic protection for over-charge, over-discharge and over-temperature
- Supports series and parallels

Module Preview



Specification

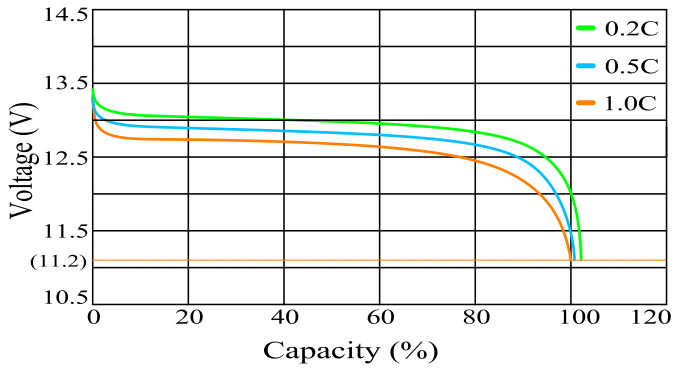
Voltage Range(V)	9.2 ~14.6
Cell	3.2V100Ah
Cell Series & Parallels	4S1P
Rated Voltage(V)	12.8
Rated Capacity(Ah)	100
Rated Energy(KWh)	1.28
Maximum Charge Current(A)	50
Maximum Discharge Current(A)	100
Pulse Current(A)(5s)	200
Discharge Cut-off Voltage(V)	11.2
Recommended Bulk Charge Voltage(V)	13.6 ~ 13.8
Life Cycle (@25°C,0.5C/0.25C,80%DOD)	Approx 2500
Short-circuit Current (< 10ms)	Approx.1200A
Dimension(W* D* H)	(330*171*220) mm
Total Weight(Kg)	Approx.10.5
Internal Resistance Fully Charged@ 25	10mOhms
Thermal Management	Nature cooling
Operating Temperature	Charge 0 ~ 50
	Discharge -20 ~ 65
Operating Humidity	60 ± 25%R.H.
System Series	6
System Parallels	6

Performance Data

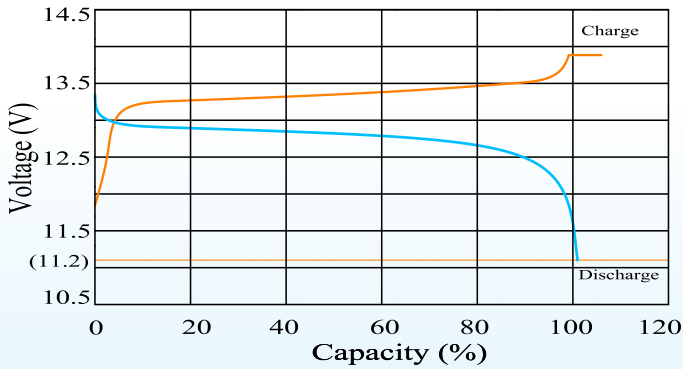
Time(min)	60	90	120	180	240	720
Constant Power(kw)	1.28	0.85	0.64	0.42	0.32	0.11
Constant Current(A)	100	66.6	50	33.3	25	8.30

Characteristics Curve

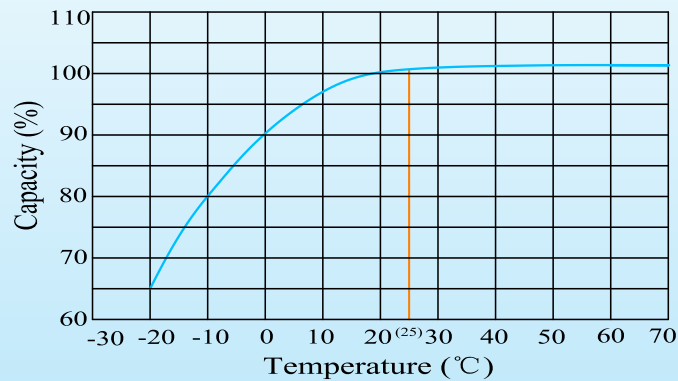
Discharge Performance at 25°C



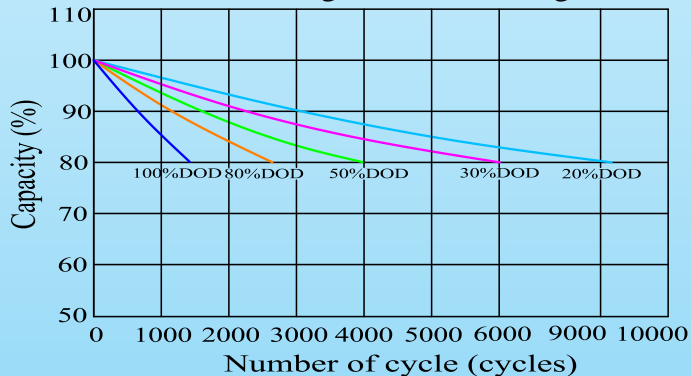
Charge and Discharge at 25°C, 0.5C



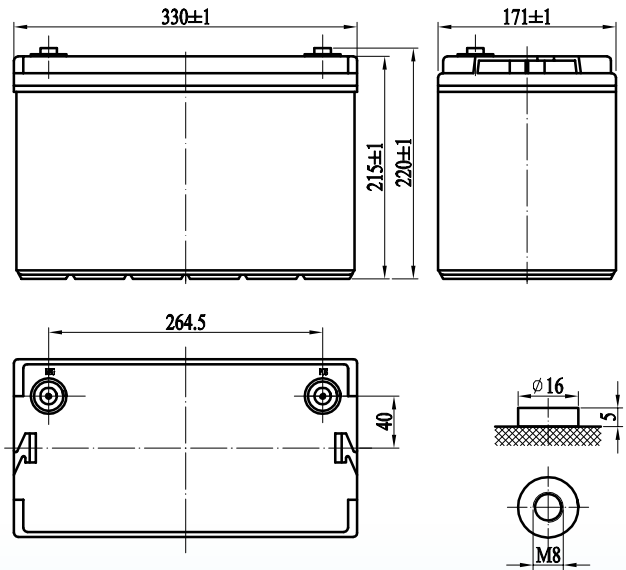
Temperature effects on capacity at 0.5C



Cycle life with DOD at 25°C
0.5C discharge and 0.25C charge



Size



MECHANICAL SPECIFICATIONS	
Case Material	ABS-FR
Cell Type-Chemistry	Prismatic LiFePO4
Terminal Type	M8
IP Grade	IP65

BMS CHARACTERISTICS	
Recommended Charge Current	25A
Maximum Charge Current	50A
Maximum Continuous Discharge Current	100A
Recommended Bulk Charge Voltage	13.6V-13.8V
Max Charge Voltage	14.4V-14.6V
Overcharge Protection Voltage	14.8V-15.2V
Charge Mode	CC/CV
Discharge Cut-off Voltage	11.2V